

PANOWELD SHADE 5

PRODUCT CODE: G-PANOWELD

PANORAMIC VISION, INDIRECT VENT SHADE 5 GOGGLE

TECHNICAL
SPECIFICATION

EYE & FACE PROTECTION

INSTRUCTIONS FOR USE

In use, ensure that the eye protector is comfortably fitted over the eyes and the elastic is adjusted to create a seal around the face

Ensure that the eye protector is in place, before entering the hazard area

DIMENSIONS OF INNER PACKAGING

Quantity: 10

Height: 180mm

Width: 200mm

Length: 290mm

Weight: 1.5Kg (Approx.)

DIMENSIONS OF OUTER PACKAGING

Quantity: 100

Height: 380mm

Width: 380mm

Length: 1050mm

Weight: 17Kg (Approx.)

LIMITATIONS OF USE

Protection will only be offered if the goggle is fitted correctly

If the lens becomes scratched or damaged they should be replaced

Do not apply paint, solvents, adhesives or self-adhesive labels, except in accordance with instructions from the manufacturer

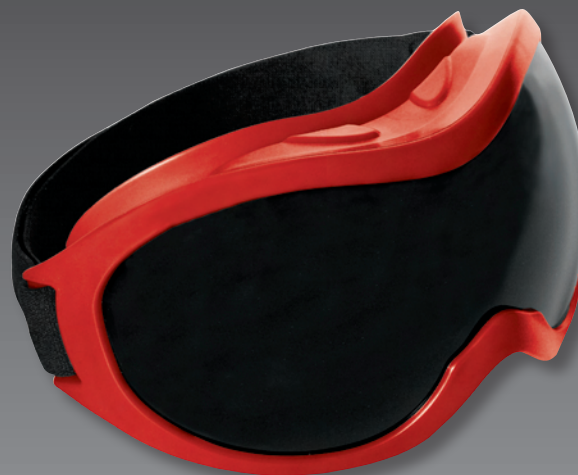
The body, when in contact with the skin may cause allergic reactions to susceptible individuals. If this occurs leave the hazard area, remove the faceshield and seek medical advice

CLEANING & MAINTENANCE

The goggle may be cleaned with soap and warm water and dried with a soft cloth

Do not clean with chemical or abrasive cleaners

The goggle should be stored out of direct sunlight, away from chemicals and not exposed to extremes of temperature



PANOWELD FEATURES & PERFORMANCE

Shade 5 gas welding lens is supplied in the housing

Protects the user against non-ionising radiation arising during welding

Anti-mist lens

MATERIALS

Main Body: PVC

Lens: 2.5mm GW5 Green Polycarbonate

Headband: Elastic

DIMENSIONS OF GOGGLE

Height: 90mm

Width: 90mm

Length: 170mm

Weight: 125g (Approx.)

CONFORMITY

Meets the requirements of EN 175, EN166 and EN169

Body Markings: EN 175

Lens Markings: CE 5GW