

TRADESMAN 2™ HALF MASK - A1P2 FILTER

PRODUCT CODE: BKG280-005-000

THE TRADESMAN 2 IS A MAINTENANCE FREE SEMI DISPOSABLE MASK SUPPLIED COMPLETE WITH FILTER CARTRIDGES

TECHNICAL
SPECIFICATION

MARTCARE® RANGE

INSTRUCTIONS FOR USE

Place the neck strap over the head and around the neck. Position the chin in the lower part of the respirator and rotate up onto the face so that the nose is in the correct position in the respirator

Fasten the head strap around the head and tighten the straps to give a comfortable fit

To check for seal, place a piece of paper, or similar, over the front of the filters and breathe in sharply, the mask should be pulled into the face. If this is not the case adjust the straps until a seal is created

Care must be taken to ensure that the correct mask and filter type is selected for the work to be carried out. If in doubt as to the type required seek professional advice



FILTER CARTRIDGE :

A1P2 cartridges protect against organic gases, vapours and dust



PERFORMANCE

Mask Performance:

Exceeds the requirement for inward leakage, retention of cartridges and flammability as detailed in EN 140

Cartridge Performance:

Offers an assigned protection factor (APF) of 10 x Workplace Exposure Limit (WEL) for organic vapours, gases and very fine dusts, fibres, fumes and aqueous mists

CLEANING & MAINTENANCE

Store the respirator in the packaging provided, out of direct sunlight, away from chemicals and abrasive substances

Cleaning the filter does not extend the life of the respirator

This product contains no serviceable parts

CONFORMITY

Certified to EN 405:2001+A1:2009

EC Type Examination Certificate number 659353

TRADESMAN 2™ HALF MASK - A1P2 FILTER

PRODUCT CODE: BKG280-005-000

THE TRADESMAN 2 IS A MAINTENANCE FREE SEMI DISPOSABLE MASK SUPPLIED COMPLETE WITH FILTER CARTRIDGES

**TECHNICAL
SPECIFICATION**

MARTCARE® RANGE

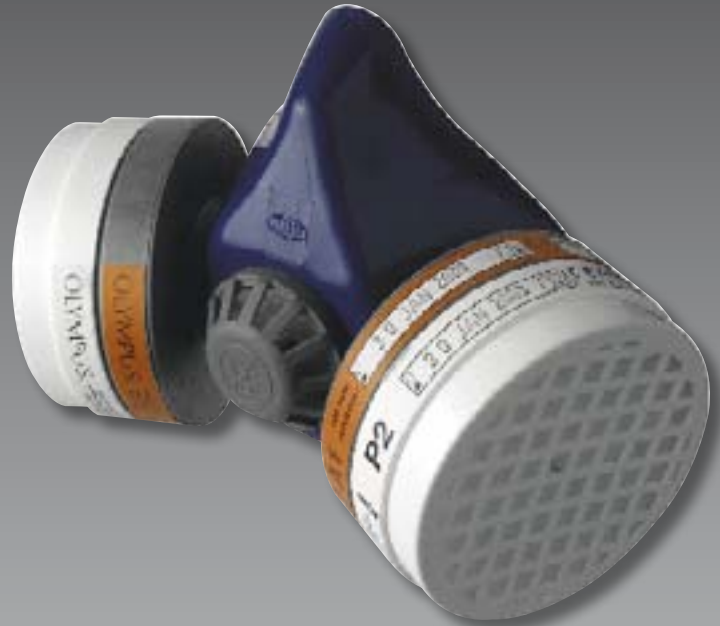
DIMENSIONS OF MASK

Height: 140mm

Width: 115mm

Length: 180mm

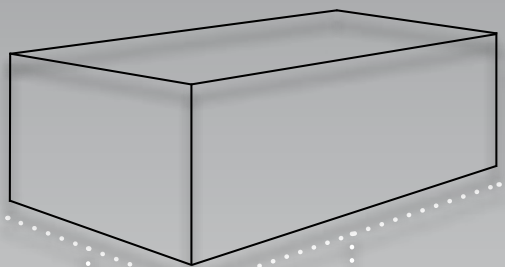
Weight: 310g (Approx.)



DIMENSIONS OF OUTER PACKAGING

Quantity: 10

Weight: 2.63Kg (Approx.)



HEIGHT:
225mm

WIDTH:
315mm

LENGTH:
410mm

MATERIALS

Body: Medical Grade PVC

Fittings: Nylon

Straps: Elastic

Valve Holder: ABS

Exhale Valve: Latex Rubber

Cartridge Outer: Polystyrene

Cartridge Inner: Manmade materials

LIMITATIONS OF USE

Protection will only be offered if the respirator is fitted correctly

The respirator must be replaced if:

- If the 'Use By' date has been reached on the cartridges
- After a maximum of 28 days after opening pack
- If it is removed whilst in the contaminated area

The mask, when in contact with the skin may cause allergic reactions to susceptible individuals

If this occurs leave the hazard area, remove mask and seek medical advice

Use in well-ventilated areas only, which are not deficient in oxygen and do not contain explosive atmospheres

Do not use where exposure to chemical gases may be experienced

Ensure good seal around the face is created before entering the hazard area

The working life of the fitted filters depend on many factors including work rate, airflow and concentration of any contaminant in the atmosphere. As the filters cannot be removed, the respirator should be changed immediately if,

- a.) Breathing difficulties due to clogging are experienced,
- b.) Breakthrough of a contaminant is detected by smell, taste or any other means, or
- c.) The respirator becomes damaged

This mask is not designed to be worn by people with facial hair or other facial features that may affect seal performance