

DECLARATION OF CONFORMITY

Manufacturer:

CLYDESDALE LTD
3 Sunbeam Rd
Woburn Road Ind. Est.
Kempston, Beds
MK42 7BZ, UK



We declare that the PPE described hereafter:

Clydesdale NOAH Arc Flash Protection Coveralls

NOAH Product Code	EN 61482-1-1, Arc Rating	EN 61482-1-2, Arc Class	Description
CLY 582 124 SSS	12.4 cal/cm ² (ATPV)	1*	Coverall

S" indicates garment sizing details.

Garments are available in any colour and with any corporate logo applied as long as it uses the type approved material.

**Extended testing also completed at 5.5kA, 0.5s, 300mm*

***Extended testing also completed at 10kA, 0.5s, 300mm*

Is in conformity with the provisions of EU Regulation 2016/425 as demonstrated by conformance to the Essential Health and Safety Requirements set out and also with the following standards, specifications and test methods:

EN 61482-1-1:2009 (approved garment combinations shown in user manual)

EN 61482-1-2 :2007 (approved garment combinations shown in user manual)

IEC 61482-2:2009

EN ISO 11612 :2015 (garment specific code letters shown in user manual)

EN ISO 13688:2013

Is identical to the PPE which is the subject of EC certificate of conformity N° 523630/1 issued by the notified body 0338:

BTTG Testing & Certification Ltd,
Unit 14, Wheel Forge Way
Trafford Park,
Manchester,
M17 1EH,
United Kingdom

Is subject to the procedure set out in Module C2 of Regulation 2016/425 under the supervision of the notified body 0338,

BTTG Testing & Certification Ltd,
Unit 14, Wheel Forge Way
Trafford Park,
Manchester,
M17 1EH
United Kingdom

Signed for and on behalf of:

Clydesdale Ltd
By David Sample
Managing Director
07th August 2020

DECLARATION OF CONFORMITY

Manufacturer:

CLYDESDALE LTD
3 Sunbeam Rd
Woburn Road Ind. Est.
Kempston, Beds
MK42 7BZ, UK



We declare that the PPE described hereafter:

Clydesdale NOAH Arc Flash Protection Anti-Static Coveralls

NOAH Product Code	EN 61482-1-1, Arc Rating	EN 61482-1-2, Arc Class	EN1149-2:2008	Description
CLY 582 125 SSS	12.5 cal/cm ² (ATPV)	1*	Using EN 1149-3:2004	A/S Coverall

S" indicates garment sizing details.

Garments are available in any colour and with any corporate logo applied as long as it uses the type approved material.

**Extended testing also completed at 5.5kA, 0.5s, 300mm*

***Extended testing also completed at 10kA, 0.5s, 300mm*

Is in conformity with the provisions of EU Regulation 2016/425 as demonstrated by conformance to the Essential Health and Safety Requirements set out and also with the following standards, specifications and test methods:

EN 61482-1-1:2009 (approved garment combinations shown in user manual)

EN 61482-1-2 :2007 (approved garment combinations shown in user manual)

IEC 61482-2:2009

EN ISO 11612 :2015 (garment specific code letters shown in user manual)

EN ISO 13688:2013

Is identical to the PPE which is the subject of EC certificate of conformity N° 523630/1 issued by the notified body 0338:

BTTG Testing & Certification Ltd,
Unit 14, Wheel Forge Way
Trafford Park,
Manchester,
M17 1EH,
United Kingdom

Is subject to the procedure set out in Module C2 of Regulation 2016/425 under the supervision of the notified body 0338,

BTTG Testing & Certification Ltd,
Unit 14, Wheel Forge Way
Trafford Park,
Manchester,
M17 1EH
United Kingdom

Signed for and on behalf of:

Clydesdale Ltd
By David Sample
Managing Director
07th August 2020

DECLARATION OF CONFORMITY

Manufacturer:

CLYDESDALE LTD
3 Sunbeam Rd
Woburn Road Ind. Est.
Kempston, Beds
MK42 7BZ, UK



We declare that the PPE described hereafter:

Clydesdale NOAH Arc Flash Protection Trousers

NOAH Product Code	EN 61482-1-1, Arc Rating	EN 61482-1-2, Arc Class	Description
CLY 583 124 SSS	12.4 cal/cm ² (ATPV)	1*	Trousers

S" indicates garment sizing details.

Garments are available in any colour and with any corporate logo applied as long as it uses the type approved material.

**Extended testing also completed at 5.5kA, 0.5s, 300mm*

***Extended testing also completed at 10kA, 0.5s, 300mm*

Is in conformity with the provisions of EU Regulation 2016/425 as demonstrated by conformance to the Essential Health and Safety Requirements set out and also with the following standards, specifications and test methods:

EN 61482-1-1:2009 (approved garment combinations shown in user manual)

EN 61482-1-2 :2007 (approved garment combinations shown in user manual)

IEC 61482-2:2009

EN ISO 11612 :2015 (garment specific code letters shown in user manual)

EN ISO 13688:2013

Is identical to the PPE which is the subject of EC certificate of conformity N° 523630/1 issued by the notified body 0338:

BTTG Testing & Certification Ltd,
Unit 14, Wheel Forge Way
Trafford Park,
Manchester,
M17 1EH,
United Kingdom

Is subject to the procedure set out in Module C2 of Regulation 2016/425 under the supervision of the notified body 0338,

BTTG Testing & Certification Ltd,
Unit 14, Wheel Forge Way
Trafford Park,
Manchester,
M17 1EH
United Kingdom

Signed for and on behalf of:

Clydesdale Ltd
By David Sample
Managing Director
07th August 2020

DECLARATION OF CONFORMITY

Manufacturer:

CLYDESDALE LTD
3 Sunbeam Rd
Woburn Road Ind. Est.
Kempston, Beds
MK42 7BZ, UK



We declare that the PPE described hereafter:

Clydesdale NOAH Arc Flash Protection Anti-static Trousers

NOAH Product Code	EN 61482-1-1, Arc Rating	EN 61482-1-2, Arc Class	EN1149-2:2008	Description
CLY 583 125 SSS	12.5 cal/cm ² (ATPV)	1*	Using EN 1149-3:2004	A/S Trousers

S" indicates garment sizing details.

Garments are available in any colour and with any corporate logo applied as long as it uses the type approved material.

**Extended testing also completed at 5.5kA, 0.5s, 300mm*

***Extended testing also completed at 10kA, 0.5s, 300mm*

Is in conformity with the provisions of EU Regulation 2016/425 as demonstrated by conformance to the Essential Health and Safety Requirements set out and also with the following standards, specifications and test methods:

EN 61482-1-1:2009 (approved garment combinations shown in user manual)

EN 61482-1-2 :2007 (approved garment combinations shown in user manual)

IEC 61482-2:2009

EN ISO 11612 :2015 (garment specific code letters shown in user manual)

EN ISO 13688:2013

Is identical to the PPE which is the subject of EC certificate of conformity N° 523630/1 issued by the notified body 0338:

BTTG Testing & Certification Ltd,
Unit 14, Wheel Forge Way
Trafford Park,
Manchester,
M17 1EH,
United Kingdom

Is subject to the procedure set out in Module C2 of Regulation 2016/425 under the supervision of the notified body 0338,

BTTG Testing & Certification Ltd,
Unit 14, Wheel Forge Way
Trafford Park,
Manchester,
M17 1EH
United Kingdom

Signed for and on behalf of:

Clydesdale Ltd
By David Sample
Managing Director
07th August 2020



DECLARATION OF CONFORMITY

Manufacturer:

CLYDESDALE LTD
3 Sunbeam Rd
Woburn Road Ind. Est.
Kempston, Beds
MK42 7BZ, UK



We declare that the PPE described hereafter:
Clydesdale NOAH Arc Flash Protection Labcoat

NOAH Product Code	EN 61482-1-1, Arc Rating	EN 61482-1-2, Arc Class	Description
CLY 584 124 S	12.4 cal/cm ² (ATPV)	1*	Labcoat

S" indicates garment sizing details.

Garments are available in any colour and with any corporate logo applied as long as it uses the type approved material.

**Extended testing also completed at 5.5kA, 0.5s, 300mm*

***Extended testing also completed at 10kA, 0.5s, 300mm*

Is in conformity with the provisions of EU Regulation 2016/425 as demonstrated by conformance to the Essential Health and Safety Requirements set out and also with the following standards, specifications and test methods:

EN 61482-1-1:2009 (approved garment combinations shown in user manual)

EN 61482-1-2 :2007 (approved garment combinations shown in user manual)

IEC 61482-2:2009

EN ISO 11612 :2015 (garment specific code letters shown in user manual)

EN ISO 13688:2013

Is identical to the PPE which is the subject of EC certificate of conformity N° 523630/1 issued by the notified body 0338:

BTTG Testing & Certification Ltd,
Unit 14, Wheel Forge Way
Trafford Park,
Manchester,
M17 1EH,
United Kingdom

Is subject to the procedure set out in Module C2 of Regulation 2016/425 under the supervision of the notified body 0338,

BTTG Testing & Certification Ltd,
Unit 14, Wheel Forge Way
Trafford Park,
Manchester,
M17 1EH
United Kingdom

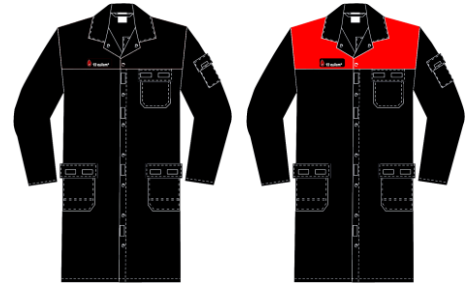
Signed for and on behalf of:

Clydesdale Ltd
By David Sample
Managing Director
07th August 2020

DECLARATION OF CONFORMITY

Manufacturer:

CLYDESDALE LTD
3 Sunbeam Rd
Woburn Road Ind. Est.
Kempston, Beds
MK42 7BZ, UK



We declare that the PPE described hereafter:

Clydesdale NOAH Arc Flash Protection Anti-static Labcoat

NOAH Product Code	EN 61482-1-1, Arc Rating	EN 61482-1-2, Arc Class	EN1149-2:2008	Description
CLY 584 125 S	12.5 cal/cm ² (ATPV)	1*	Using EN 1149-3:2004	A/S Labcoat

S" indicates garment sizing details.

Garments are available in any colour and with any corporate logo applied as long as it uses the type approved material.

**Extended testing also completed at 5.5kA, 0.5s, 300mm*

***Extended testing also completed at 10kA, 0.5s, 300mm*

Is in conformity with the provisions of EU Regulation 2016/425 as demonstrated by conformance to the Essential Health and Safety Requirements set out and also with the following standards, specifications and test methods:

EN 61482-1-1:2009 (approved garment combinations shown in user manual)

EN 61482-1-2 :2007 (approved garment combinations shown in user manual)

IEC 61482-2:2009

EN ISO 11612 :2015 (garment specific code letters shown in user manual)

EN ISO 13688:2013

Is identical to the PPE which is the subject of EC certificate of conformity N° 523630/1 issued by the notified body 0338:

BTTG Testing & Certification Ltd,
Unit 14, Wheel Forge Way
Trafford Park,
Manchester,
M17 1EH,
United Kingdom

Is subject to the procedure set out in Module C2 of Regulation 2016/425 under the supervision of the notified body 0338,

BTTG Testing & Certification Ltd,
Unit 14, Wheel Forge Way
Trafford Park,
Manchester,
M17 1EH
United Kingdom

Signed for and on behalf of:

Clydesdale Ltd
By David Sample
Managing Director
07th August 2020

A handwritten signature in black ink, appearing to read 'David Sample', written over a white background.

DECLARATION OF CONFORMITY

Manufacturer:

CLYDESDALE LTD
3 Sunbeam Rd
Woburn Road Ind. Est.
Kempston, Beds
MK42 7BZ, UK



We declare that the PPE described hereafter:
Clydesdale NOAH Arc Flash Protection Jackets

NOAH Product Code	EN 61482-1-1, Arc Rating	EN 61482-1-2, Arc Class	Description
CLY 585 124 S	12.4 cal/cm ² (ATPV)	1*	Jacket

S" indicates garment sizing details.

Garments are available in any colour and with any corporate logo applied as long as it uses the type approved material.

**Extended testing also completed at 5.5kA, 0.5s, 300mm*

***Extended testing also completed at 10kA, 0.5s, 300mm*

Is in conformity with the provisions of EU Regulation 2016/425 as demonstrated by conformance to the Essential Health and Safety Requirements set out and also with the following standards, specifications and test methods:

EN 61482-1-1:2009 (approved garment combinations shown in user manual)

EN 61482-1-2 :2007 (approved garment combinations shown in user manual)

IEC 61482-2:2009

EN ISO 11612 :2015 (garment specific code letters shown in user manual)

EN ISO 13688:2013

Is identical to the PPE which is the subject of EC certificate of conformity N° 523630/1 issued by the notified body 0338:

BTTG Testing & Certification Ltd,
Unit 14, Wheel Forge Way
Trafford Park,
Manchester,
M17 1EH,
United Kingdom

Is subject to the procedure set out in Module C2 of Regulation 2016/425 under the supervision of the notified body 0338,

BTTG Testing & Certification Ltd,
Unit 14, Wheel Forge Way
Trafford Park,
Manchester,
M17 1EH
United Kingdom

Signed for and on behalf of:

Clydesdale Ltd
By David Sample
Managing Director
07th August 2020

DECLARATION OF CONFORMITY

Manufacturer:

CLYDESDALE LTD
3 Sunbeam Rd
Woburn Road Ind. Est.
Kempston, Beds
MK42 7BZ, UK



We declare that the PPE described hereafter:

Clydesdale NOAH Arc Flash Protection Anti-static Jackets

NOAH Product Code	EN 61482-1-1, Arc Rating	EN 61482-1-2, Arc Class	EN1149-2:2008	Description
CLY 585 125 S	12.5 cal/cm ² (ATPV)	1*	Using EN 1149-3:2004	A/S Jacket

S" indicates garment sizing details.

Garments are available in any colour and with any corporate logo applied as long as it uses the type approved material.

**Extended testing also completed at 5.5kA, 0.5s, 300mm*

***Extended testing also completed at 10kA, 0.5s, 300mm*

Is in conformity with the provisions of EU Regulation 2016/425 as demonstrated by conformance to the Essential Health and Safety Requirements set out and also with the following standards, specifications and test methods:

EN 61482-1-1:2009 (approved garment combinations shown in user manual)

EN 61482-1-2 :2007 (approved garment combinations shown in user manual)

IEC 61482-2:2009

EN ISO 11612 :2015 (garment specific code letters shown in user manual)

EN ISO 13688:2013

Is identical to the PPE which is the subject of EC certificate of conformity N° 523630/1 issued by the notified body 0338:

BTTG Testing & Certification Ltd,
Unit 14, Wheel Forge Way
Trafford Park,
Manchester,
M17 1EH,
United Kingdom

Is subject to the procedure set out in Module C2 of Regulation 2016/425 under the supervision of the notified body 0338,

BTTG Testing & Certification Ltd,
Unit 14, Wheel Forge Way
Trafford Park,
Manchester,
M17 1EH
United Kingdom

Signed for and on behalf of:

Clydesdale Ltd
By David Sample
Managing Director
07th August 2020

A handwritten signature in black ink, appearing to read 'David Sample', is written over a white background.

DECLARATION OF CONFORMITY

Manufacturer:

CLYDESDALE LTD
3 Sunbeam Rd
Woburn Road Ind. Est.
Kempston, Beds
MK42 7BZ, UK



We declare that the PPE described hereafter:

Clydesdale NOAH Arc Flash Protection Long Sleeve Polo Shirt

NOAH Product Code	EN 61482-1-1, Arc Rating	EN 61482-1-2, Arc Class	Description
CLY 587 109 S	10.9 cal/cm ² (ATPV)	1*	Polo shirt ("Rugby Shirt")

S" indicates garment sizing details.

Garments are available in any colour and with any corporate logo applied as long as it uses the type approved material.

**Extended testing also completed at 5.5kA, 0.5s, 300mm*

***Extended testing also completed at 10kA, 0.5s, 300mm*

Is in conformity with the provisions of EU Regulation 2016/425 as demonstrated by conformance to the Essential Health and Safety Requirements set out and also with the following standards, specifications and test methods:

EN 61482-1-1:2009 (approved garment combinations shown in user manual)

EN 61482-1-2 :2007 (approved garment combinations shown in user manual)

IEC 61482-2:2009

EN ISO 11612 :2015 (garment specific code letters shown in user manual)

EN ISO 13688:2013

Is identical to the PPE which is the subject of EC certificate of conformity N° 523630/1 issued by the notified body 0338:

BTTG Testing & Certification Ltd,
Unit 14, Wheel Forge Way
Trafford Park,
Manchester,
M17 1EH,
United Kingdom

Is subject to the procedure set out in Module C2 of Regulation 2016/425 under the supervision of the notified body 0338,

BTTG Testing & Certification Ltd,
Unit 14, Wheel Forge Way
Trafford Park,
Manchester,
M17 1EH
United Kingdom

Signed for and on behalf of:

Clydesdale Ltd
By David Sample
Managing Director
07th August 2020

A handwritten signature in black ink, appearing to read 'David Sample', is written over a white background.

DECLARATION OF CONFORMITY

Manufacturer:

CLYDESDALE LTD
3 Sunbeam Rd
Woburn Road Ind. Est.
Kempston, Beds
MK42 7BZ, UK



We declare that the PPE described hereafter:

Clydesdale NOAH Arc Flash Protection Double Layer Labcoat

NOAH Product Code	EN 61482-1-1, Arc Rating	EN 61482-1-2, Arc Class	Description
CLY 584 392 S	39.2 cal/cm ² (ATPV)	2*	Double Layer Labcoat

S" indicates garment sizing details.

Garments are available in any colour and with any corporate logo applied as long as it uses the type approved material.

**Extended testing also completed at 5.5kA, 0.5s, 300mm*

***Extended testing also completed at 10kA, 0.5s, 300mm*

Is in conformity with the provisions of EU Regulation 2016/425 as demonstrated by conformance to the Essential Health and Safety Requirements set out and also with the following standards, specifications and test methods:

EN 61482-1-1:2009 (approved garment combinations shown in user manual)

EN 61482-1-2 :2007 (approved garment combinations shown in user manual)

IEC 61482-2:2009

EN ISO 11612 :2015 (garment specific code letters shown in user manual)

EN ISO 13688:2013

Is identical to the PPE which is the subject of EC certificate of conformity N° 523630/1 issued by the notified body 0338:

BTTG Testing & Certification Ltd,
Unit 14, Wheel Forge Way
Trafford Park,
Manchester,
M17 1EH,
United Kingdom

Is subject to the procedure set out in Module C2 of Regulation 2016/425 under the supervision of the notified body 0338,

BTTG Testing & Certification Ltd,
Unit 14, Wheel Forge Way
Trafford Park,
Manchester,
M17 1EH
United Kingdom

Signed for and on behalf of:

Clydesdale Ltd
By David Sample
Managing Director
07th August 2020

DECLARATION OF CONFORMITY

Manufacturer:

CLYDESDALE LTD
3 Sunbeam Rd
Woburn Road Ind. Est.
Kempston, Beds
MK42 7BZ, UK



We declare that the PPE described hereafter:

Clydesdale NOAH Arc Flash Protection Winter Fleece

NOAH Product Code	EN 61482-1-1, Arc Rating	EN 61482-1-2, Arc Class	Description
CLY 586 179 S	17.9 cal/cm ² (ATPV)	2*	Winter Fleece

S" indicates garment sizing details.

Garments are available in any colour and with any corporate logo applied as long as it uses the type approved material.

**Extended testing also completed at 5.5kA, 0.5s, 300mm*

***Extended testing also completed at 10kA, 0.5s, 300mm*

Is in conformity with the provisions of EU Regulation 2016/425 as demonstrated by conformance to the Essential Health and Safety Requirements set out and also with the following standards, specifications and test methods:

EN 61482-1-1:2009 (approved garment combinations shown in user manual)

EN 61482-1-2 :2007 (approved garment combinations shown in user manual)

IEC 61482-2:2009

EN ISO 11612 :2015 (garment specific code letters shown in user manual)

EN ISO 13688:2013

Is identical to the PPE which is the subject of EC certificate of conformity N° 523630/1 issued by the notified body 0338:

BTTG Testing & Certification Ltd,
Unit 14, Wheel Forge Way
Trafford Park,
Manchester,
M17 1EH,
United Kingdom

Is subject to the procedure set out in Module C2 of Regulation 2016/425 under the supervision of the notified body 0338,

BTTG Testing & Certification Ltd,
Unit 14, Wheel Forge Way
Trafford Park,
Manchester,
M17 1EH
United Kingdom

Signed for and on behalf of:

Clydesdale Ltd
By David Sample
Managing Director
07th August 2020

DECLARATION OF CONFORMITY

Manufacturer:

CLYDESDALE LTD
3 Sunbeam Rd
Woburn Road Ind. Est.
Kempston, Beds
MK42 7BZ, UK



We declare that the PPE described hereafter:

Clydesdale NOAH Arc Flash Protection Balaclava

NOAH Product Code	Fabric Testing EN 61482-1-1	Fabric, EN 61482-1-2, Arc Class	Description
CLY 581 121 S	12.1 cal/cm ² (ATPV)	1*	Balaclava

S" indicates garment sizing details.

Garments are available in any colour and with any corporate logo applied as long as it uses the type approved material.

**Extended testing also completed at 5.5kA, 0.5s, 300mm*

***Extended testing also completed at 10kA, 0.5s, 300mm*

Is in conformity with the provisions of EU Regulation 2016/425 as demonstrated by conformance to the Essential Health and Safety Requirements set out and also with the following standards, specifications and test methods:

EN ISO 11612 :2015 (garment specific code letters shown in user manual)
EN ISO 13688:2013

Is identical to the PPE which is the subject of EC certificate of conformity N° 523630/1 issued by the notified body 0338:

BTTG Testing & Certification Ltd,
Unit 14, Wheel Forge Way
Trafford Park,
Manchester,
M17 1EH,
United Kingdom

Is subject to the procedure set out in Module C2 of Regulation 2016/425 under the supervision of the notified body 0338,

BTTG Testing & Certification Ltd,
Unit 14, Wheel Forge Way
Trafford Park,
Manchester,
M17 1EH
United Kingdom

Signed for and on behalf of:

Clydesdale Ltd
By David Sample
Managing Director
07th August 2020