



Colourways:



CUSTOMER INFORMATION

Storm-Flex PU Jacket

Description:

Our lightweight Storm-Flex PU Jackets offer fantastic foul weather protection without a reduction in breathability – ideal if you're performing manual tasks in the great outdoors.

- Conforms to EN471 Class 3:2 (Yellow/Orange Versions Only)
- Conforms to EN 343 Class 3:2
- Conforms to GO/RT 3279 (Orange Version Only)
- 2 band & brace
- Breathable
- Heavy duty zip front fastening
- Snap button fastening front

Fabric:

- PU coated polyester tricot fabric

Applications:

Tasks with a high visibility requirement - traffic, security, event marshalling, driving, construction, roadworks, wet weather tasks. Rail/Underground (Orange Only)

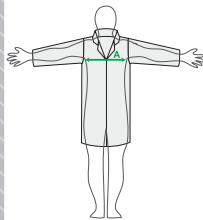
Product Codes:

| | | |
|---------|---------|---------------------------------|
| 18241-7 | S - 4XL | HV Stormflex With Tape - Yellow |
| 18941-7 | S - 4XL | Stormflex - Yellow |
| 18211-7 | S - 4XL | Stormflex With Tape - Navy |
| 18911-7 | S - 4XL | Stormflex - Navy |
| 18231-7 | S - 4XL | Stormflex With Tape - Green |
| 18931-7 | S - 4XL | Stormflex - Green |
| 18281-7 | S - 4XL | HV Stormflex With Tape - Orange |

Standards: EN 471 GO/RT 3279 EN 343



EC council directive 89/686/EEC
 BS EN 471:2003+A1:2007 - High Visibility Warning Clothing for Professional Use
 GO/RT 3279:2008 - Rail Industry Standard
 BS EN 343:2003+A1:2007 - Protection Against Rain

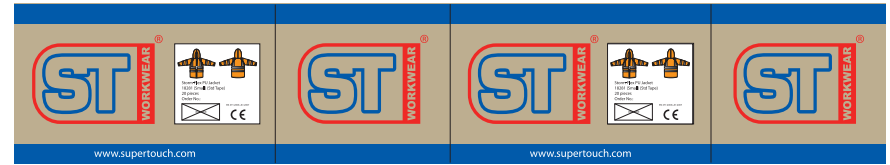


Size Chart:

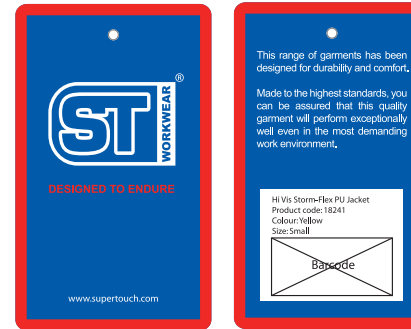
| Measurements in cm | S | M | L | XL | 2XL | 3XL | 4XL |
|--------------------|-------|---------|---------|---------|---------|---------|---------|
| To fit (A) | 92-96 | 100-104 | 106-112 | 116-122 | 124-132 | 136-144 | 148-152 |

Packaging: 1 piece per bag - 20 bags per case

Outer Carton Artwork:



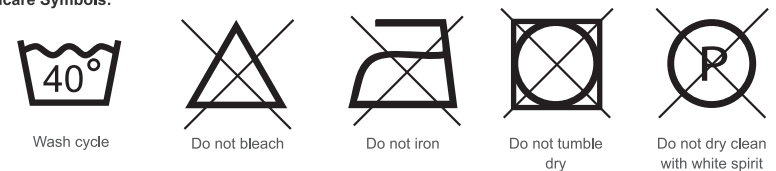
Inner Artwork:



Feature Symbols:



Washcare Symbols:



The information shown on this specification sheet is intended as a guide and is advisory only. All details were correct at the time of issue. As conditions of use are ultimately beyond our control, we advise that the product is tested for the particular application before use.